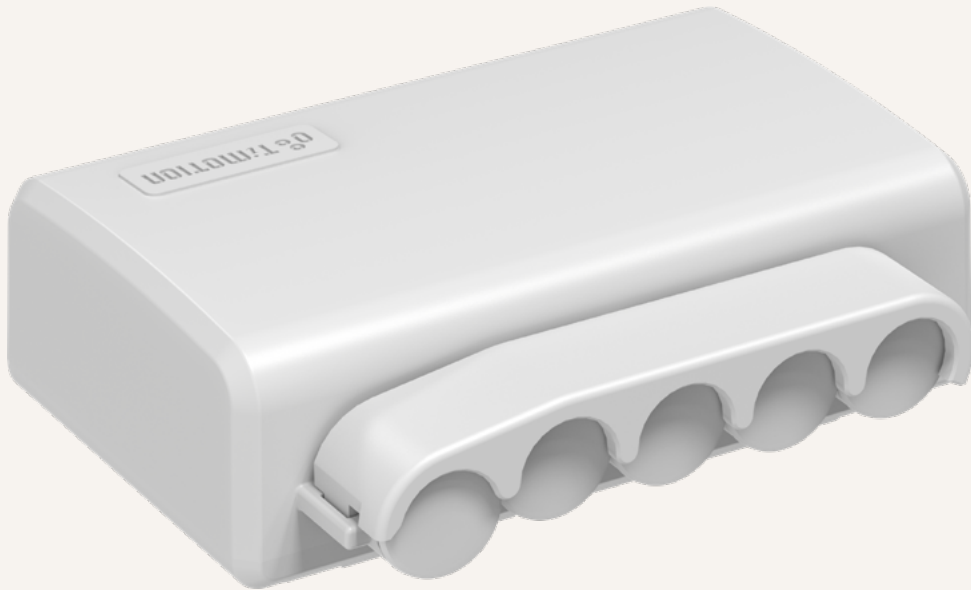


TC14

series



Product Segments

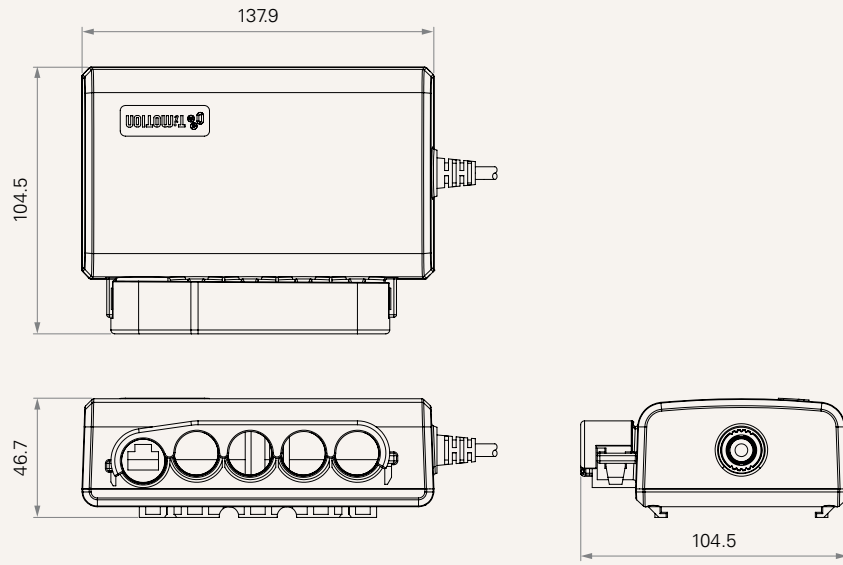
- **Care Motion**
- **Comfort Motion**

General Features

| | |
|-------------------------------|--|
| Number of motors | 1~4 |
| IP rating | IP66 |
| Options | Wireless module (optional) |
| Input voltage | 24V DC |
| Certificate | IEC60601-1, ES60601-1, IEC60601-1-2, UL962 |
| Color | Grey |
| Operational temperature range | +5°C~+45°C |

Drawing

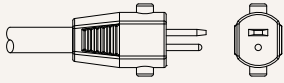
Standard Dimensions
(mm)



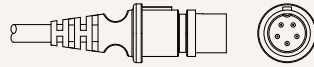
| | | | | |
|--|--|--------------------|--------------------------|----------------------------|
| Input Voltage | 2 = 24VDC | | | |
| MCU | B = Without | C = With | | |
| Number of Actuators | 1 = 1 | 2 = 2 | 3 = 3 | 4 = 4 |
| Handset Channel | 1 = 1 | | | |
| Backup Battery Channel | 0 = Without | | | |
| Wireless Module | 0 = Without | R = 315 MHz | F = 433 MHz | G = 2.4G |
| DC Input Plug See page 4 | 1 = Small 01P | 2 = Long DIN 5P | 3 = Tinned leads | |
| DC Cable Length (mm) | 1 = Straight, 1000 | 2 = Straight, 1500 | 3 = Straight, 2000 | |
| Fixation See page 4 | 1 = On the actuator (TA10 / TA23 / TA31) | | 2 = On the steel bracket | 3 = On the plastic bracket |
| Buzzer | 0 = Without | 1 = With | | |
| Color | 2 = Pantone 428C | | | |
| IP Rating | 1 = Without | 2 = IP54 | 3 = IP66 | |

DC Input Plug

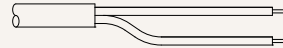
1 = Small 01P



2 = Long DIN 5P

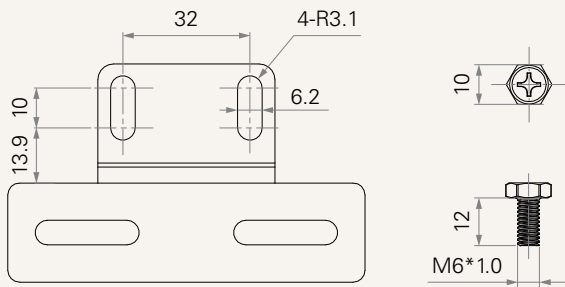


3 = Tinned leads

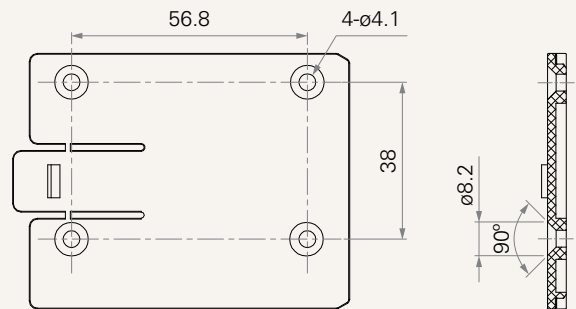


DC Input Plug

2 = On the steel bracket



3 = On the plastic bracket



Terms of Use

The user is responsible for determining the suitability of TiMOTION products for a specific application. TiMOTION products are subject to change without prior notice.